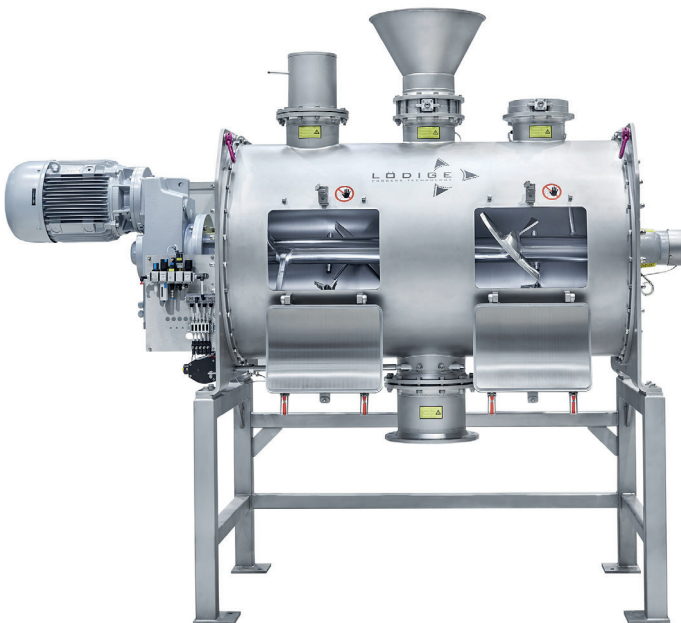


# PLOUGHSHARE® MIXER FOR BATCH OPERATION TYPE FKM LS



- Newest member of Lödige's Ploughshare® Mixer family
- Budget friendly pricing
- Quick availability
- "Made in Germany"
- Same manufacturing quality level, same mixing performance and same mixing results as with a classical Lödige Mixer
- **Sizing:**  
FKM130LS - FKM 3000LS
- **Material:**  
AISI 304L / 316L
- **Options:**
  - Choppers
  - Liquid addition
  - Product thermometer
  - Control system
  - ATEX version
- **Delivery time:**  
3-4 months from order placement



FKM 130 LS



FKM 1200 LS



FKM 3000 LS

Spec / Machine type	FKM 130 LS	FKM 300 LS	FKM 600 LS	FKM 1200 LS	FKM 1600 LS	FKM 2000 LS	FKM 3000 LS
Inspection door size (mm)	520 x 340	520 x 340	540 x 400	540 x 400	540 x 400	540 x 400	540 x 400
Qty inspection doors	1	1	1	2	2	2	2
Main drive power (kW)	7,5	15	22	22 / 45	30 / 55	37 / 75	55 / 75
Chopper power (kW)	5,5	5,5	5,5	7,5	7,5	7,5	7,5
Qty chopper (optional)	1	1	2	2	2	3	3
Qty lance (optional)	1	1	2	2	2	3	3
Feeding port 1	DN200 PN6	DN250 PN6	DN250 PN6	DN250 PN6	DN250 PN6	DN250 PN6	DN250 PN6
Feeding port 2 (optional)	-	-	DN250 PN6	DN250 PN6	DN250 PN6	DN250 PN6	DN250 PN6
Ventilation port	DN200 PN6	DN200 PN6	DN250 PN6	DN250 PN6	DN250 PN6	DN250 PN6	DN250 PN6
Discharge port	DN350 PN6	DN350 PN6	DN350 PN6	DN350 PN6	DN350 PN6	DN350 PN6	DN350 PN6
Discharge door size (mm)	160 x 120	240 x 180	240 x 180	240 x 180	240 x 180	240 x 180	240 x 180
Base frame (optional, mm)	H = 910	H = 910	H = 1100	H = 1100	H = 1100	H = 1100	H = 1100

All drives in protection class IP 66 as standard, with marking CE, UL/USA, CCC for universal, worldwide use.

An ATEX version is also available for this machine.