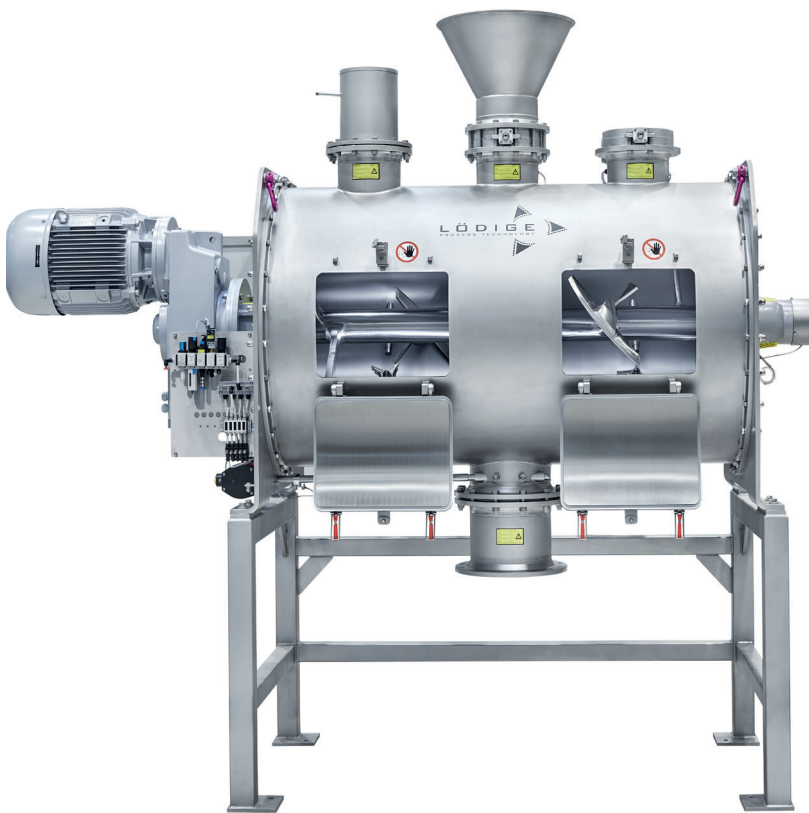


PLOUGHSHARE® MIXER FOR BATCH OPERATION TYPE FKM Basic



- Excellent value for money
- Fast availability – short delivery times for planning reliability
- Universal design
- Proven performance
- Quality “Made in Germany” – precision and reliability from German manufacturing

- **Sizing:**
FKM 130 Basic - FKM 3000 Basic

- **Material:**
AISI 304L / 316L

- **Options:**
 - Choppers
 - Liquid addition
 - Product thermometer
 - Control system
 - ATEX version

- **Delivery time:**
approx. 4 months from order placement



FKM 130 Basic



FKM 1200 Basic



FKM 3000 Basic

Spec / Machine type	FKM 130 Basic	FKM 300 Basic	FKM 600 Basic	FKM 1200 Basic	FKM 1600 Basic	FKM 2000 Basic	FKM 3000 Basic
Inspection door size (mm)	520 x 340	520 x 340	540 x 400	540 x 400	540 x 400	540 x 400	540 x 400
Qty inspection doors	1	1	1	2	2	2	2
Main drive power (kW)	7,5	15	22	22 / 45	30 / 55	37 / 75	55 / 75
Chopper power (kW)	5,5	5,5	5,5	7,5	7,5	7,5	7,5
Qty chopper (optional)	1	1	2	2	2	3	3
Qty lance (optional)	1	1	2	2	2	3	3
Feeding port 1	DN200 PN6	DN250 PN6	DN250 PN6	DN250 PN6	DN250 PN6	DN250 PN6	DN250 PN6
Feeding port 2 (optional)	-	-	DN250 PN6	DN250 PN6	DN250 PN6	DN250 PN6	DN250 PN6
Ventilation port	DN200 PN6	DN200 PN6	DN250 PN6	DN250 PN6	DN250 PN6	DN250 PN6	DN250 PN6
Discharge port	DN350 PN6	DN350 PN6	DN350 PN6	DN350 PN6	DN350 PN6	DN350 PN6	DN350 PN6
Discharge door size (mm)	160 x 120	240 x 180	240 x 180	240 x 180	240 x 180	240 x 180	240 x 180
Base frame (optional, mm)	H = 910	H = 910	H = 1100	H = 1100	H = 1100	H = 1100	H = 1100

All drives in protection class IP 66 as standard, with marking CE, UL/USA, CCC for universal, worldwide use.